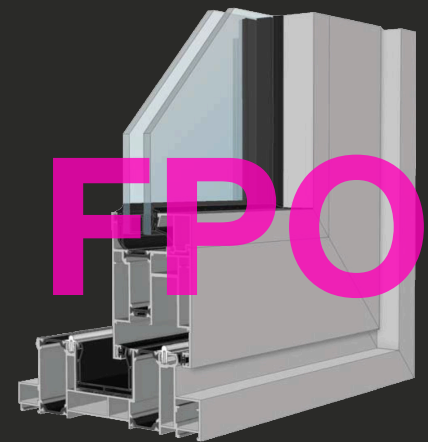
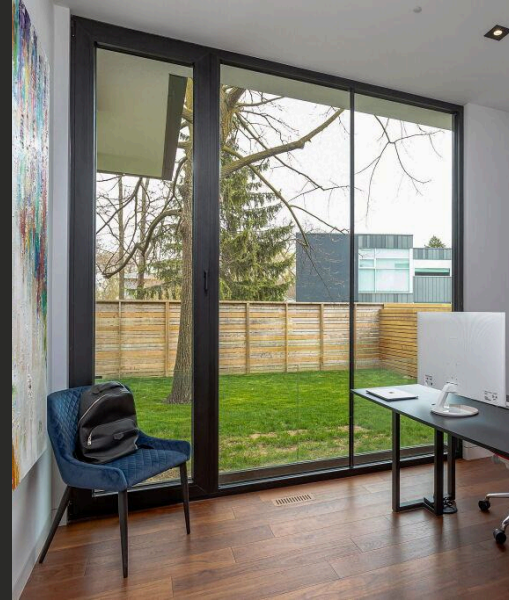


ALX2060

/ Dual Action Tilt and Turn Aluminum Window *Window Wall*

- ✓ 24 mm Polyamide thermal break strips for optimized insulation and structural performance.
- ✓ Internal rebate gasket in Epdm for secure glazing and seal stability.
- ✓ Concealed mounted hinges as an option. For an extra sleek look.
- ✓ Glazing solutions for units ranging from 9mm to 53 mm in thickness.
- ✓ Frame depth of 2-3/8", 4" or 4-3/4".
- ✓ Fixed removable bug screen available.
- ✓ U= 2.00 W/M2K in a double-glazed configuration.
- ✓ U= 1.57 W/M2K in a triple-glazed configuration



CLASSIC SERIES

Classic series

This premium tilt-and-turn aluminum window system delivers unmatched functionality and refined European inspired performance. Its dual action design offers easy ventilation and secure inward opening. While its versatility in size and configuration has strengthened its reputation for over 25 years. Proudly manufactured in Canada, it is engineered to withstand the harsh Nordic winters and provide superior comfort, efficiency, security and durability.

