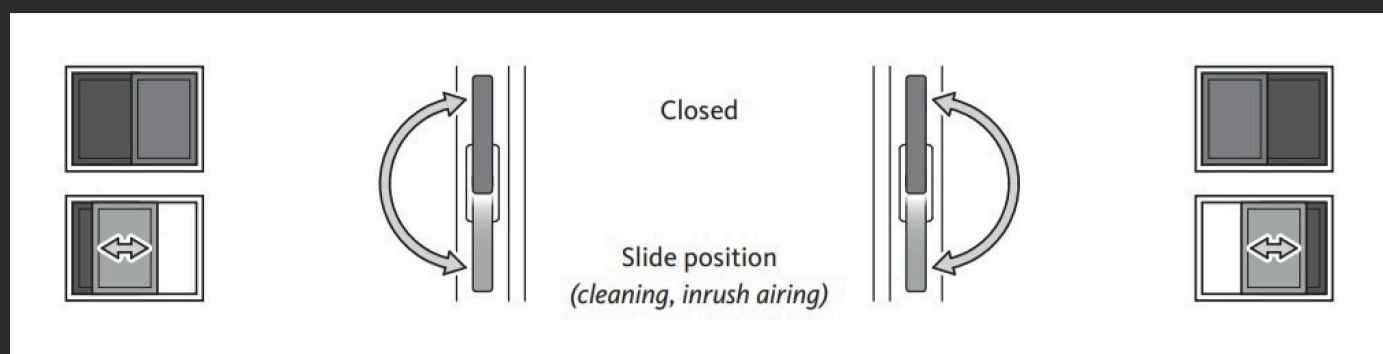


Lift&Slide hardware

Operation of Lift&Slide hardware

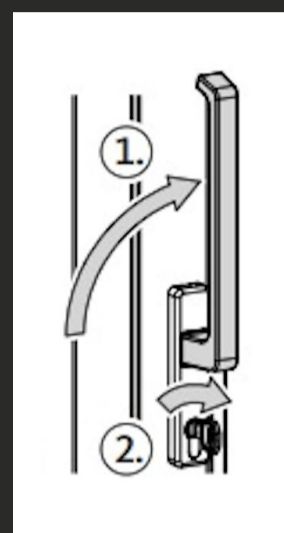


Operation of Lift&Slide hardware with profile cylinder

The Lift&Slide system is locked as follows:

- Ensure the sliding sash is completely closed and rotate the handle into the closed position ①.
- Turn the key in the profile cylinder to lock the sliding sash ②.

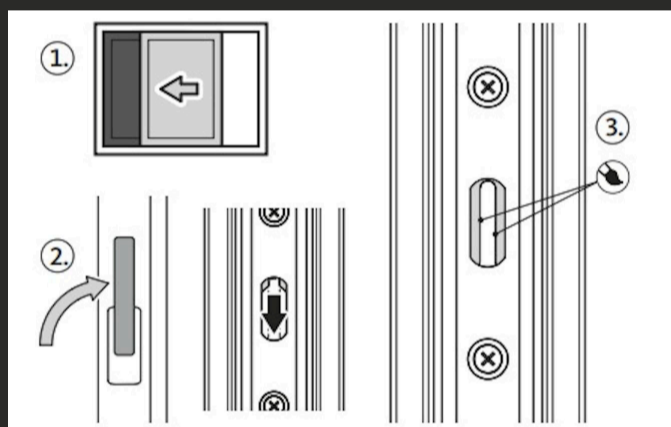
The sliding sash will only be locked properly if the sliding door is completely closed and the handle is in the closed position. Unlocking follows the same procedure in reverse.



NOTE : The bogies of the Lift&Slide hardware are maintenance-free.

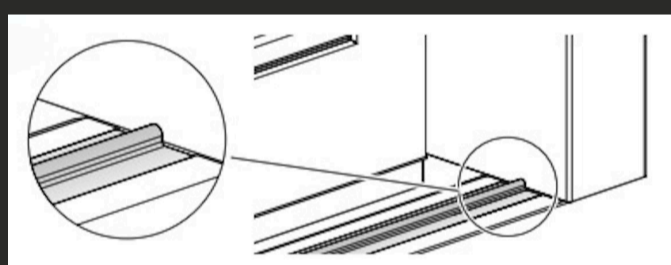
Grease the lock (1 x annually)

- Open the sliding sash ①.
- Rotate the handle into the closed position ②.
- Grease the locking points, sliding and bearing points with grease ③.



Clean the roller track (as required)

- Keep the roller track free of coarse dirt and contaminants.
- Do not use any aggressive cleaning agents when cleaning.



Safety instructions



DANGER

Risk of falling out of the sliding sash when open!

Do not leave the sliding sash unattended when it is open! Keep children away from the sliding sash when open!



WARNING

Risk of injury and of damage to the Lift&Slide element caused by objects.

Do not wedge or prop the sash open by placing an object between the sliding sash and frame!



DANGER

Risk of shearing injury when actuating the handle!

Never insert your fingers into the recesses of the locking systems!



WARNING

Risk of injury and of damage to the Lift&Slide element if the sliding sash is subject to excessive load.

Do not put any additional weight load on the sliding sash!



WARNING

Risk of injury and of damage to the Lift&Slide element if the sliding sash is opened and closed in an uncontrolled manner.

Guide the sliding sash by hand over its entire movement until it is in the final closed or opening position.



WARNING

Risk of crushing and entrapment.

When closing the sliding sash, ensure that no one is reaching between the sash and frame. Keep children away from the sliding sash!



WARNING

Risk of crushing and entrapment.

When opening the sliding sash, make sure that there are no body parts in the area of the meeting stile strip and especially in the area of the flush pull on the outside. Keep children away from the sliding sash!